

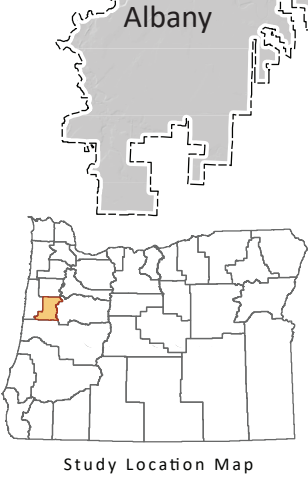
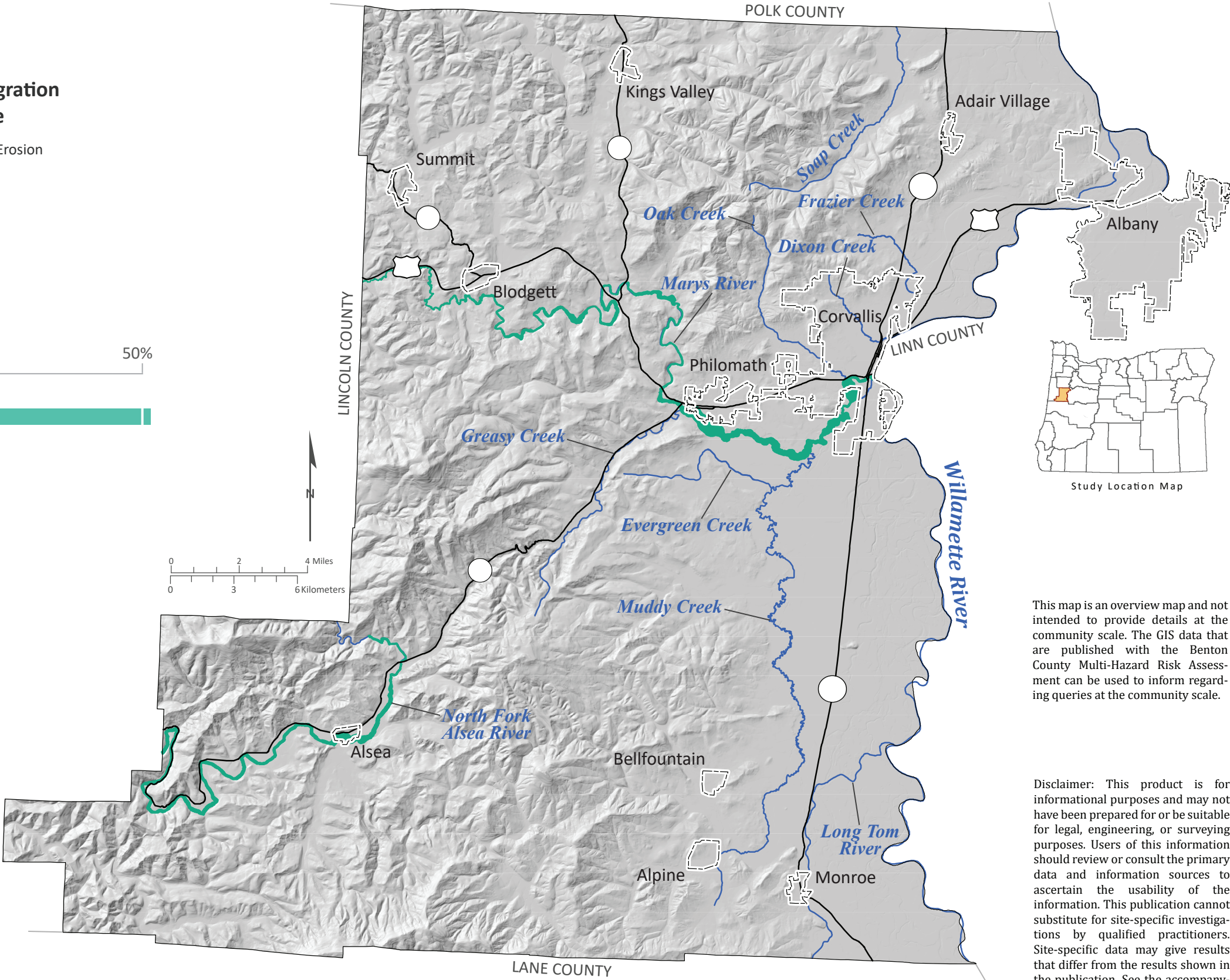
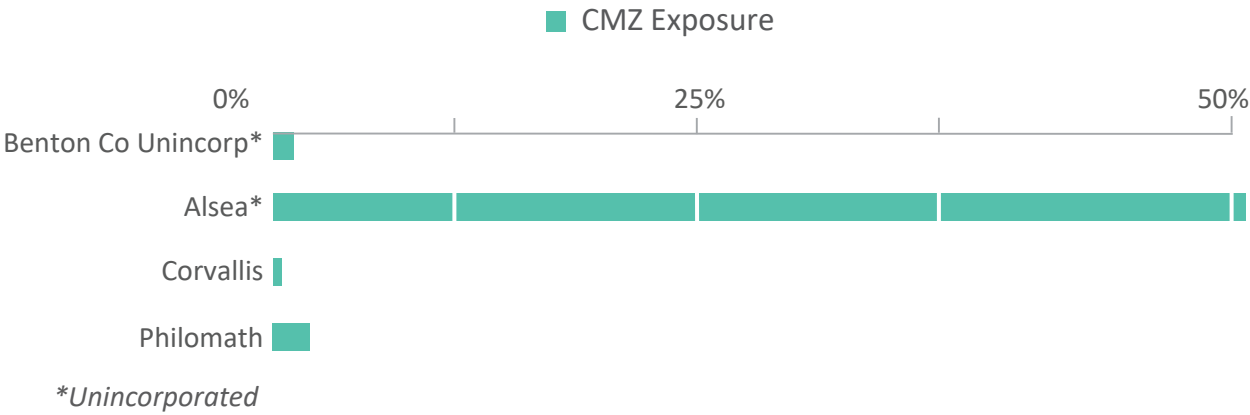


Channel Migration Hazard Map of Benton County, Oregon

Channel migration is a process by which a stream’s course changes over time due to bank erosion and stream deposition. The channel migration zone is defined by the 100-year Erosion Hazard Area (EHA). Shown are the 100-year EHA in Benton County. Buildings within these areas are at greater risk to channel migration hazard than other areas.

Channel Migration Hazard Zone

100-Year Erosion



This map is an overview map and not intended to provide details at the community scale. The GIS data that are published with the Benton County Multi-Hazard Risk Assessment can be used to inform regarding queries at the community scale.

Disclaimer: This product is for informational purposes and may not have been prepared for or be suitable for legal, engineering, or surveying purposes. Users of this information should review or consult the primary data and information sources to ascertain the usability of the information. This publication cannot substitute for site-specific investigations by qualified practitioners. Site-specific data may give results that differ from the results shown in the publication. See the accompanying text report for more details on the limitations of the methods and data used to prepare this publication.

Data Sources:
Channel migration zone (30-year): DOGAMI (Appleby and others, 2021)
Roads: Oregon Department of Transportation Signed Routes (2013)
Place names: U.S. Geological Survey Geographic Names Information System (2015)
City limits: Oregon Department of Transportation (2014)
Basemap: Oregon Lidar Consortium (2014)
Hydrography: U.S. Geological Survey National Hydrography Dataset (2017)

Projection: NAD 1983 UTM Zone 10N
Software: Esri® ArcMap 10, Adobe® Illustrator CC
Cartography by: Matt C. Williams, 2022